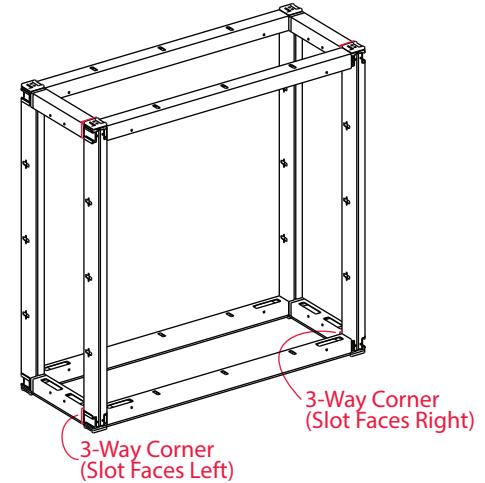
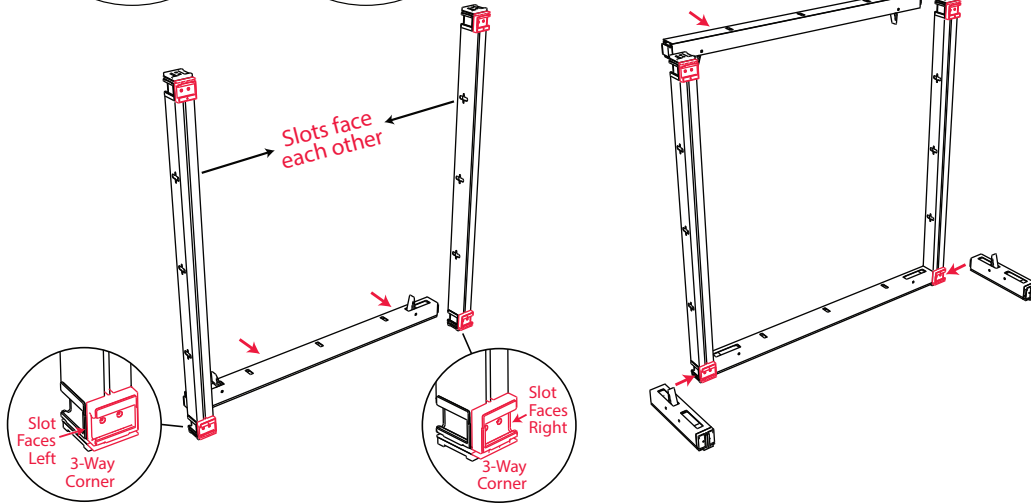
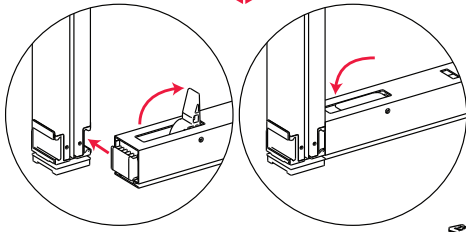


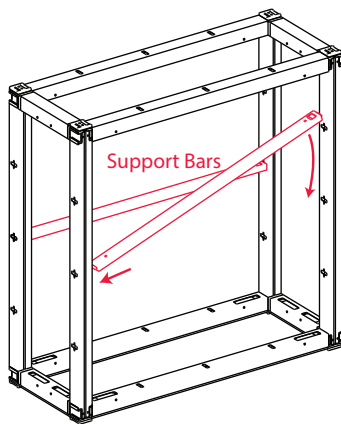
Double Counter Assembly Instructions



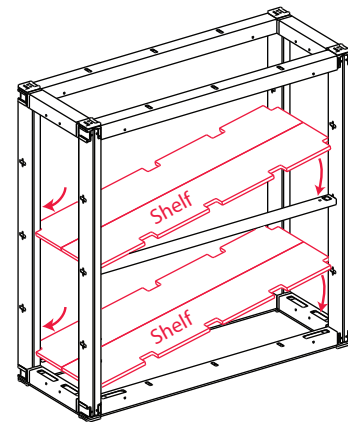
1. Locate two short vertical bars with 3-way corners on both ends. Attach the two together with a horizontal bar by lifting the lock levers and sliding the parts together.

2. Attach two short horizontals to the bottom 3-way corners. Attach a long horizontal to the top of the verticals. **Do not lock levers on the small horizontals until step 3.**

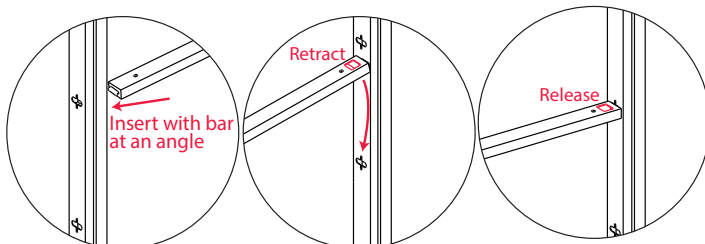
3. Add two more vertical bars, making sure that the short horizontal bars attach to their 3-way corners. Add the remaining horizontal bars to complete the frame. **Lock all levers.**



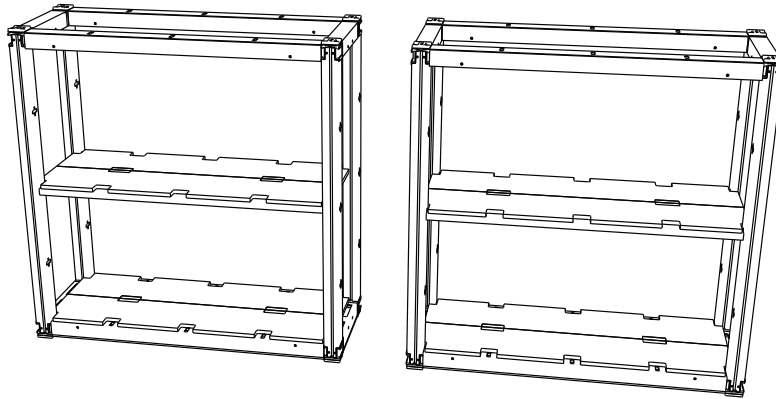
4. Attach two shelf support bars. Insert the non-spring-loaded end into the slot on the left with the other end of the bar lifted. Retract the spring lock and lower the right side until it lines up with the right slot. Release the spring lock.



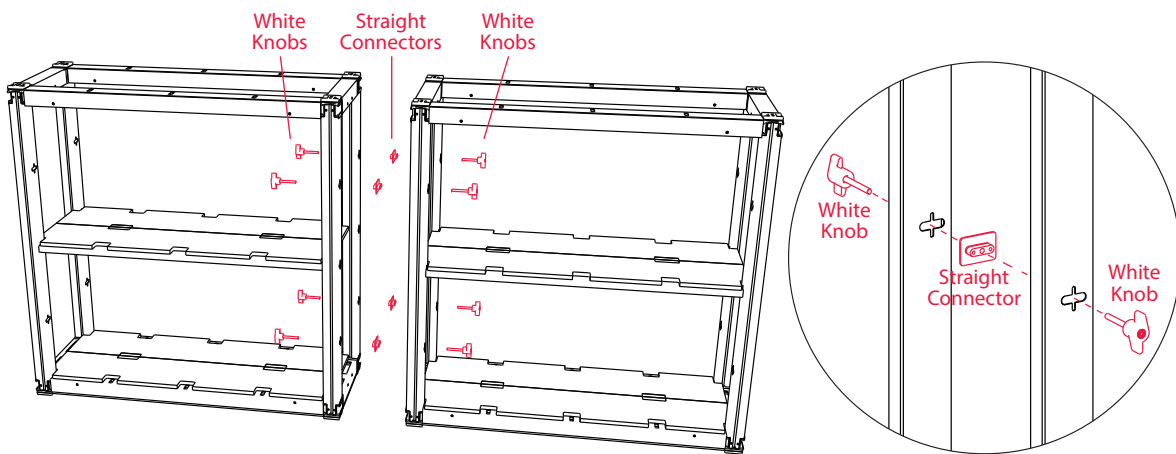
5. Unfold and rest one shelf on the bottom horizontal bars. Unfold and rest the second shelf on the support bars.



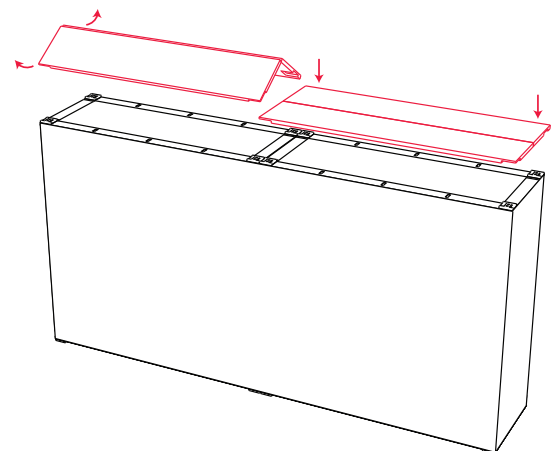
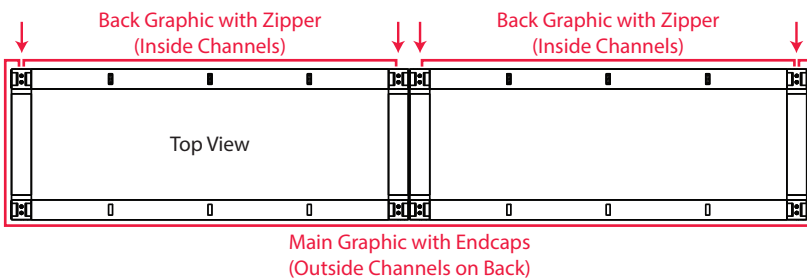
Double Counter Assembly Instructions



6. Repeat steps 1-5 to assemble a second counter frame.



7. Attach the two frames together with four straight connectors. The straight connectors are placed between the frames and are secured with two white knobs each.



8. Install the fabric graphics. See graphic installation instructions for details. It is most common for the front graphic to start on the back, wrap around the left side, front, right side, and end on the back.

9. Unfold and rest the countertops on top.